



**TransTank<sup>®</sup>**  
INTERNATIONAL

Operator's Product HandBook

# **StandBy10<sup>™</sup> & BackUp16<sup>™</sup>**

Knapsack & Portable Fire Fighters



**“HELPING TO DEVELOP AND PROTECT THE LAND”**

## Contents

Contents	2
Introduction	3
Your Safety	3
Risk Assessment	4
Operating Instructions	5
Maintenance	5
Parts List	6
Warranty	9
Warranty Registration Card	10

## Disclaimer

All information, illustrations, and specifications contained in this manual are based on the latest product information available at the time of this publication's printing. TransTank International (TTi) reserves the right to alter and substitute specifications and methods at any time, in line with our commitment to continuous improvement.

No patent liability is assumed with respect to the use of information contained within this manual. While every precaution has been taken in the preparation of this manual, TTi assumes no responsibility for errors or omissions.

**Thank you for your purchase of a BackUp 16™ or StandBy10™ which is complete and ready to use.**

## Introduction

Please carefully read your operators handbook before mounting & using your Backup16 or Standby10. Keep your handbook in a safe place.

These highly efficient and portable fire fighters are your first defence for ember suppression, managing spot fires and burning off. They feature a reliable, double action hand pump with an adjustable nozzle. Twin one-way valves prevent syphoning or leakage when not in use.

The robust, ergonomic tanks are designed to withstand rough handling associated with fire situations.

## Your Safety

To ensure your own safety and that of your employees if applicable you must comply with all relevant environmental, work place health and safety legislation and codes of practice. In particular, be aware of Rural Fire Service guidelines for safety when fighting fires or backburning.

Select and wear appropriate Personal protection Equipment in accordance with the label of the product you intend using and your own safe work practices.

You must be in good mental health to operate this sprayer and not be under the influence of alcohol or any drugs that could impair your vision, physical strength, dexterity, judgment, or other mental capacity

All operators must be trained in safe use of this unit

# Risk Assessment

## Product Information Risk Assessment Sheet TTi - Diesel Tanks

TASK	HAZARDS	RISK	CONTROL MEASURES
Partially fill the tank with water, start the motor & test the spray unit	Manual handling; slips, trips or falls; petrol; fumes; fingers jammed; electric shock or Electricity.	Med	<ul style="list-style-type: none"> <li>Concentrate on task;</li> <li>Follow safe manual handling techniques;</li> <li>Don't lift on your own if &gt; 20kg, bend knees &amp; keep back straight;</li> <li>Keep fingers clear; keep unit at least 8m away from overhead powerlines;</li> <li>Ensure AS 3760: 2001 Testing Electrical Equipment applies;</li> <li>Water away from electrical sources.</li> </ul>
Check weather conditions & select the appropriate PPE to suit the chemicals to be used	Manual handling; slips, trips or falls	Low	<ul style="list-style-type: none"> <li>Put on PPE as per the chemical requirements in the Material Safety Data Sheet-coveralls, gloves, safety footwear, glasses &amp; respirator;</li> <li>Follow safe manual handling techniques;</li> <li>don't lift on your own if &gt;20kg, bend knees &amp; keep back straight.</li> </ul>
Mix chemicals (if applicable) & fill spray tank/fire fighting unit	As above; spray drift, chemical spillage, emission of vapors or flammability; weather; untrained visitors	Med	<p>As above;</p> <ul style="list-style-type: none"> <li>User trained in the state's chemical mixing &amp; administration course eg Chem. Cert;</li> <li>Follow the relevant Environment Protection Authority requirements;</li> <li>Fire extinguisher present;</li> <li>Keep visitors away from the job unless wearing full PPE.</li> </ul>
Use spray or fire fighter units.	As above; loss of load; heat & cold; noise; exceed load limit of vehicle; hose	High	<p>As above;</p> <ul style="list-style-type: none"> <li>Wear clothes to suit heat &amp; cold;</li> <li>Wear hearing protection if noise &gt; 85 dBa;</li> <li>Follow the manufacturer's safe operation instruction for the vehicle and the spray unit;</li> <li>Don't overload - water weighs 1kg for every 1 litre;</li> <li>Secure load to vehicle;</li> <li>Keep hose tidy;</li> <li>Put unit brakes on</li> </ul>
Clean up, maintenance & storage	As above	High	<p>As above;</p> <ul style="list-style-type: none"> <li>Continue to wear PPE for clean up;</li> <li>Store unit in a dry, well ventilated area.</li> </ul>

# Operating Instructions

## Before Use

Check all hoses, connections and hose clamps to ensure that the unit has been delivered to you without transportation loss or damage.

Before attempting any spraying with your new unit, operate it with water only to familiarize yourself with its features and capabilities and to ensure that your sprayer has arrived in a safe working condition.

Please contact your dealer immediately should anything appear to have been damaged.

## Operation - BackUp16™

Fill tank from appropriate water source. Place the unit on a surface at the same height as your back. Slide one arm through a strap and stand upright while swinging the opposite arm through the remaining strap.

Tighten straps securely

To operate. Remove lance from storage position. Grasp the centre handle firmly and pull the front of the lance outward using the angled handle.

Aim the water jet at the base of the fire and continue pumping by moving handle in & out. Due to the double action pump mechanism water is pumped on both in & out stroke to deliver a consistent water jet.

Adjust nozzle by turning tip to achieve the desired spray pattern.

## Operation - Standby10™

Your Standby10 is supplied with two spring steel mount brackets for easy mounting on any convenient location on your tractor or trailed equipment.

To mount unit, remove the clips from the tank & fasten securely to any suitable flat surface approx. 280 mm apart. Take care not to drill or screw thru any electrical cables, pneumatic or hydraulic lines which may be located on the underside of the fixing area.

After filling tank locate in clips by pushing down firmly.

To operate. Remove unit from storage clips with a firm upward pull. Grasp the centre handle firmly and pull the front of the lance outward using the angled handle.

Aim the water jet at the base of the fire and continue pumping by moving handle in & out. Due to the double action pump mechanism water is pumped on both in & out stroke to deliver a consistent water jet.

Adjust nozzle by turning tip to achieve the desired spray pattern. After use ensure tank is refilled before returning to storage position.

Please note that the unit is designed for fire fighting use and not for chemical spraying.

Please consult the manufacturer for further information.

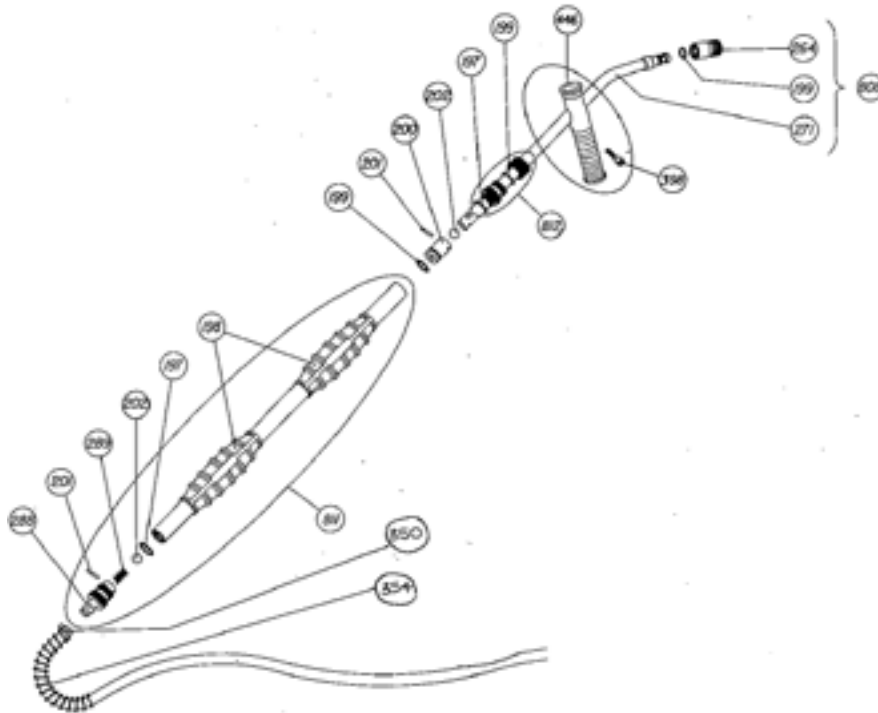
## Maintenance

Periodically unscrew knurled greasing cover [#812] on the lance, fill with grease & screw up again.

Periodically check all hoses, fittings and nozzle parts. Replace any worn or broken parts

When storing the unit ensure that it is clean and dry and store in a well ventilated place.

## Parts List



### Lance Parts

No	Code	Description
197	8.39.04.303	Rubber Washer
198	8.39.04.306	Grip
199	2.23.15.911	Round Joint AN-11
200	8.39.04.009	Piston
201	8.39.04.005	Pin
202	2.20.08.010	Stainless eteel ball 10
264	8.39.08.017	Nozzle
271	8.39.08.620	Tube with Sprayer
288	8.39.08.002	Inlet Nipple
289	8.39.08.324	Spring
350	2.03.24.012	Clamp
354	8.39.08.327	100mm Spring
398	2.59.26.740	Screw
446	8.39.04.324	Grip
808	8.39.08.803	Tube with nozzle
811	8.39.08.801	Complete Body
812	8.39.08.805	Greasing Nipple



### BackUp16 Parts

No	Code	Description
1	YP1016	Fire fighting knapsack - tank only
2	YP1000	Lance
3	YP105	Filter basket
4	YP286	Lid - no breather
5	YP286B	Lid breather
6	YP1002	1/2" rubber hose
7	YP1005	Clip clamps
8	YP1001	knapsack pick up tube
9	STA69	8mm foot filter
10	YP1003	3/8" bspm x 1/2" tail, nylon
11	YP1010	Shoulder pad
12	YP1011	38mm strap, per mtr
13	YP1012	Plastic buckles
14	BOX15	Packing box



## StandBy10 Parts

No	Code	Description
1	YFATM10TANK	Tank only - Tractor mount fire fighter
2	YFBKT	Mounting brackets - per pair
3	YP105	Filter basket
4	YP286	Lid - no breather
5	YP286B	Lid breather
6	YP1002	1/2" rubber hose, per mtr
7	YP1005	clip clamps
8	YP1007	Tractor mount pick up tube
9	STA69	8mm foot filter
10	YP1003	3/8"bspm x 1/2" tail, nylon
11	YP1000	Lance, complete
12	YP1006	Stainless steel lance strap
13	B14X1.12/R	1/4" x 1-1/2" roofing bolt
14	NN14	1/4" unc nyloc nut
15	BOX16	Packing box



## Warranty

This Fire Fighting unit has been guaranteed free from defect in materials, workmanship or manufacture for 12 months from the date of purchase. Any parts which appear to us to be defective either in material or workmanship will be replaced or repaired at no cost to the purchaser, subject to the following conditions:

1. The registration card enclosed in this handbook must be returned to us within 7 days of purchase
2. The guidelines in this handbook have been adhered to in every respect.
3. In unlikely event of sprayer failure, this should be reported to your dealer who will act on your behalf to resolve the issue to your satisfaction.
4. Any defective parts will be returned by your dealer within 7 days of failure, together with a report describing the failure and conditions in which the failure occurred.
5. The following are specifically excluded from the terms of warranty
  - Fair wear and tear to pump moving parts and diaphragms
  - Fair wear and tear to nozzles and nozzle bodies
  - Damage caused by neglect or lack of lubrication
  - Damage caused by misuse or abuse
  - Damage caused while the sprayer is in transit

Whilst every care has been taken in the preparation of these instructions, no liabilities can be accepted with regard to errors or omissions. Product specifications are subject to change in line with our commitment to continuous improvement.

## Warranty Registration Card

To validate your warranty, please complete registration on-line at:

[www.tti.com.au/warranty-registration](http://www.tti.com.au/warranty-registration)

Alternatively if you are unable to register on-line fill in all the details below, copy and email to [warranty@tti.com.au](mailto:warranty@tti.com.au) or post to the address on the back cover.



**I have read and understood the instructions in this booklet.**

Date Purchased: \_\_\_\_\_

Model: \_\_\_\_\_

Serial Number: \_\_\_\_\_  
*(located on side of tank)*

Purchaser's Name: \_\_\_\_\_

Purchaser's Address: \_\_\_\_\_  
\_\_\_\_\_

Post code: \_\_\_\_\_

Phone #: \_\_\_\_\_ Mobile #: \_\_\_\_\_

Email Address: \_\_\_\_\_

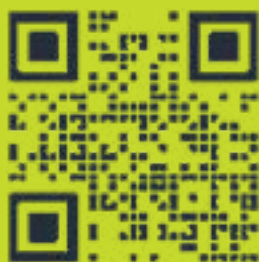
Purchaser's Signature: \_\_\_\_\_







**TranTank<sup>®</sup>**  
INTERNATIONAL



Scan to view our PDF  
Handbook online

**1800 816 277**

**sales@tti.com.au**

PO Box 137, Nathalia, VIC, 3638

Murray Valley Hwy, Nathalia, VIC 3638

Proudly Built By:

---

---

Signature

Date

Quality Checked By:

---

---

Signature

Date

**www.tti.com.au**